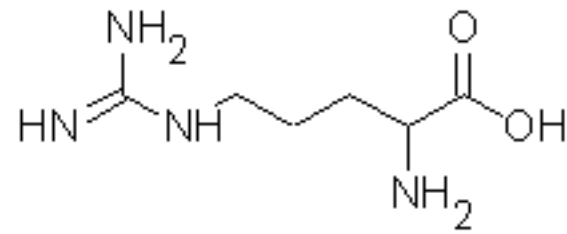
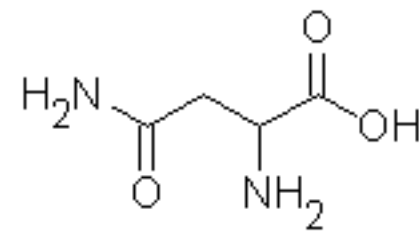


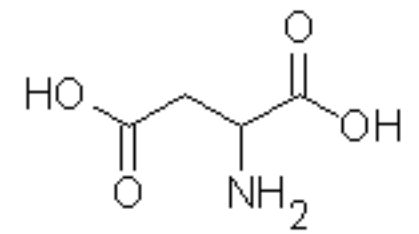
Alanin (Ala)



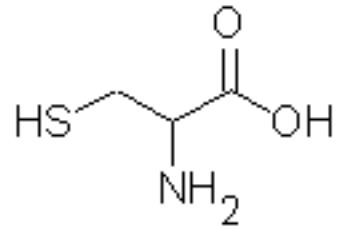
Arginin (Arg) ⌘



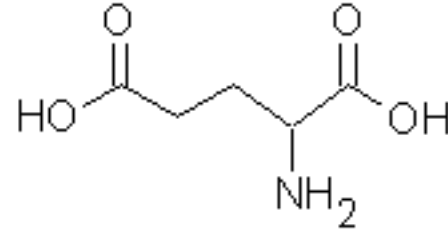
Asparagin (Asn)



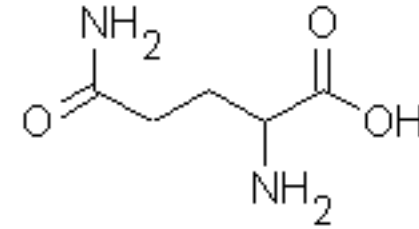
Asparaginsäure (Asp)



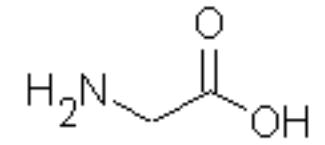
Cystein (Cys)



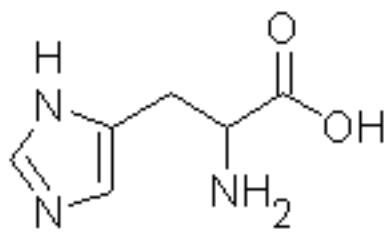
Glutaminsäure (Glu)



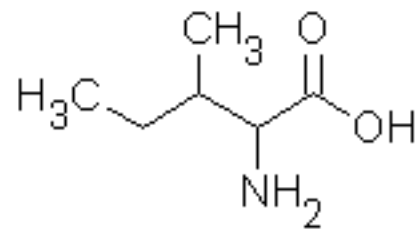
Glutamin (Gln)



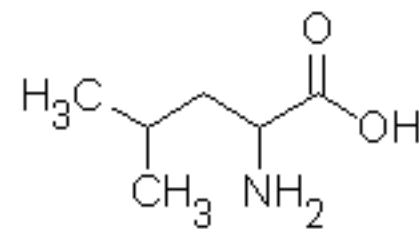
Glycin (Gly)



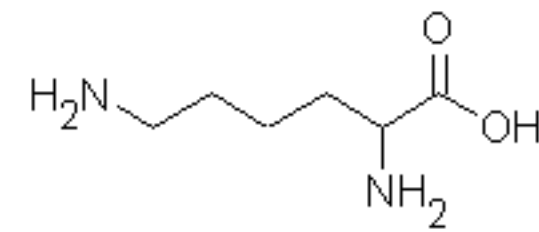
Histidin (His) ⌘



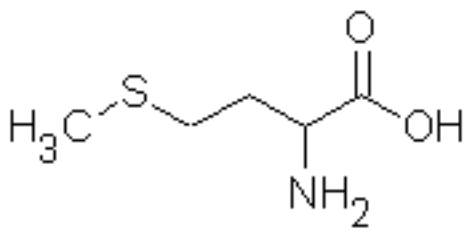
Isoleucin (Ile) ❖



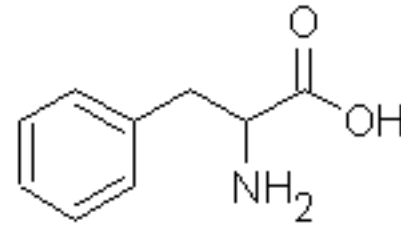
Leucin (Leu) ❖



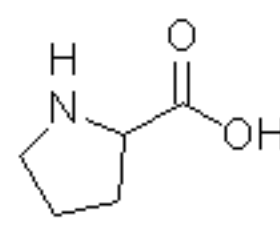
Lysin (Lys) ❖



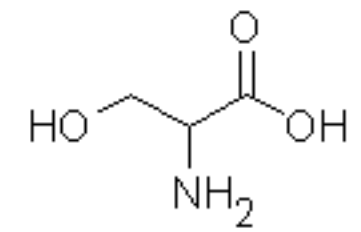
Methionin (Met) ❖



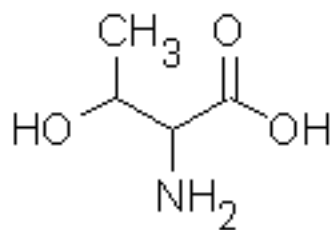
Phenylalanin (Phe) ❖



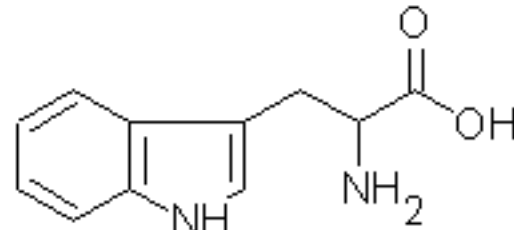
Prolin (Pro)



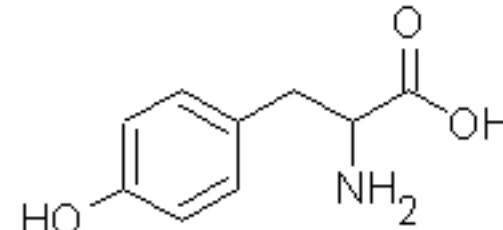
Serin (Ser)



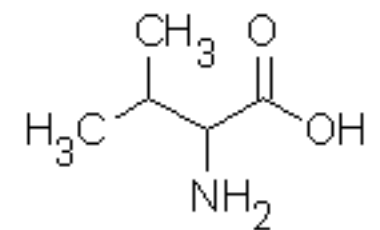
Threonin (Thr) ❖



Tryptophan (Trp) ❖



Tyrosin (Tyr)



Valin (Val) ❖

⌘ = semi-essentiell

❖ = essentiell